

## *Quick User Guide*

# DB9009-TX

## Professional IP Audio Encoder

### → BEFORE YOU USE THIS PRODUCT ←

In order to be able to enjoy all the benefits of owning your new DEVA product, please verify first that the latest software and firmware release were installed.

Visit [www.devabroadcast.com/downloads](http://www.devabroadcast.com/downloads) for the most recent software and firmware downloads, prior the installation.

This Quick user guide will make the installation of the DB9009-TX quick and easy. Applying these principles, you can simplify the process and save yourself extra time and effort. **For more information about the Safety precautions and the Operating environment recommendations please refer to the complete user manual - [www.devabroadcast.com/downloads](http://www.devabroadcast.com/downloads).**

## STEP 1

### Connection

1. Install the unit on its operation place;
2. Before connecting the AC Power, make sure that the fuse rating is in accordance with the mains supply at your location. DB9009-TX Power Supply Factory Settings are: 100-240 V AC; 1A Fuse.;
3. Connect the DB9009-TX to the TCP/IP network using a cable with RJ-45 connector;
4. Optionally, connect the necessary for the configuration - audio cables (analog and/or digital), GPI and etc.

## STEP 2

### Network Settings

DB9009-TX can be operated in two methods. Through the Front panel navigational menu or via a standard WEB Browser.

For more information about the Front panel navigational menu, please refer to the User Manual which can be found on [www.devabroadcast.com/downloads](http://www.devabroadcast.com/downloads)

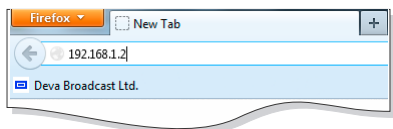
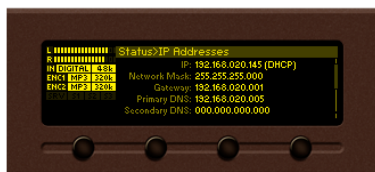
## STEP 3

### WEB Interface

There are two options for access to the WEB Interface of DB9009-TX IP Audio Decoder. The first one is through manual identification of the IP address of the device, and the second one is through the Network discovery option (For Windows 7 and above users only).

### STEP 3.1

#### Manual IP Address Identification



1. Connect the device to a local network or to the Internet by the applied LAN cable. Through the Front panel navigational menu pressing the [OK] button you will enable you to enter the device main menu;
2. Using the [RIGHT] navigational button find the "Status" section located at the end of the Menu;
3. Press the [OK] Button to enter the "Status Section". Via the Front panel navigational menu press the [DOWN] button. This operation will visualize the screen containing information about the IP Address of the device;
4. Open a new WEB Browser and enter the device IP address in the address field then press "Enter";
5. A window that requires username and password will appear. Default values being - Username: user or admin, Password: pass.

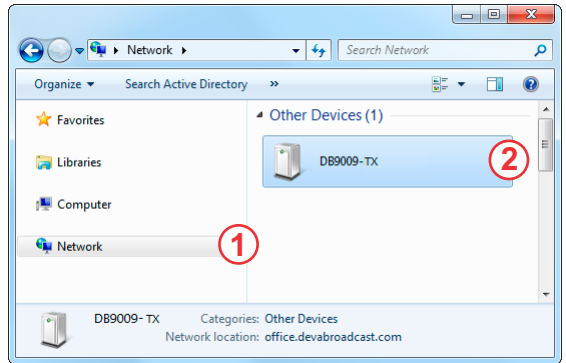
**NOTE:** Due to the inability of some WEB Browsers to read the IP address format displayed on the screen of the device, the numbers included in the IP Address must be written without the leading zeros. For example: **192.168.020.068** must be written as **192.168.20.68**

## STEP 3.2

## Network Discovery for Windows 7

Network discovery is a network setting that defines whether your computer can see (find) other computers and devices on the network and whether other computers on the network can see your computer. By default, Windows Firewall blocks network discovery but you can enable it.

1. Open Advanced sharing settings by clicking the Start button, and then click on "Control Panel". In the search box, type "network", click "Network and Sharing Center", and then, in the left pane click "Change advanced sharing settings".
2. Select your current network profile.
3. Click **"Turn on network discovery"**, and then click "Save changes". If you're prompted for an administrator password or confirmation, type the password or provide confirmation.
4. To access the device, open a new Explorer bar, open a new Explorer bar and click on **Network (1)**. If you have successfully enabled the network discovery option, the device will be displayed. Double click on **DB9009-TX (2)** will open a new WEB browser window requiring username and password. (For more information refer to **Step 4**).



**NOTE:** If you have already enabled this function on your computer just open a new Explorer bar and click on **Network (1)**. The device will be displayed. If not, follow the instructions from **Step 3.2**.

## STEP 4

## Device Access

The DB9009-TX provides you with a protected access to the device settings. You can choose between two types of log in:

1. As an **ADMINISTRATOR** – which will give you full control over the settings (username: admin, password: pass);

2. As a **USER** – this type of log-in will allow you to monitor the device without applying settings (username: user, password: pass).

**In order to make the necessary adjustments to the device, please log in as ADMINISTRATOR.**

**DB9009-TX - Professional IP Audio Encoder**

DEVA BROADCAST

III: Digital (Main Digital)      GPIO: ①②③      05 May 2017      Uptime:      Session:      Logout  
13:38:14      0d 01:51:21      02:58

**Inputs**

Digital		Analog	
L	R	L	R
-2.1	0	-3.1	-2.4
-5	-4.0	-5	-2.4
-10	-10	-10	-10
-15	-15	-15	-15
-20	-20	-20	-20
-25	-25	-25	-25
-30	-30	-30	-30
-40	-40	-40	-40
-50	-50	-50	-50
-60	-60	-60	-60
-70	-70	-70	-70
-80	-80	-80	-80

**Active connections**

Type	Status	Remote Peer	Codec

**Status**

- Input
- Encoding
- IP Audio
- General
- Network
- GPIO
- Other

**FW:** 1.0.1516    **IP Address:** 192.168.20.145 (DHCP)    **Netmask:** 255.255.255.0    **DNS 1:** 192.168.20.5  
**Serial:** 9K9TXDEV    **MAC:** 00:04:A3:98:21:45    **Gateway:** 192.168.20.1    **DNS 2:** 0.0.0.0

*A successful log in the Control Window will look like this*

Upon entering the device's settings, you will be able to apply the needed adjustments to the DB9009-TX. In order the applied settings to be used press the [Save] button, placed on the bottom right part of each screen.

The screenshot displays the configuration page for the DB9009-TX Professional IP Audio Encoder. The interface is titled "DB9009-TX - Professional IP Audio Encoder Configuration" and features the DEVA BROADCAST logo. At the top, it shows the current input as "Digital (Main Digital)", the GPI status, and system information including the date (05 May 2017), time (13:38:37), uptime (0d 01:51:44), and session duration (02:58). A "Logout" button is located in the top right corner.

The main configuration area is divided into several sections:

- Inputs:** Contains two level meters for Digital and Analog inputs. The Digital meter ranges from -3.9 to -70 dB, and the Analog meter ranges from -4.8 to -70 dB.
- Active connections:** A table with columns for Type, Status, Remote Peer, and Codec.
- Input:** Includes dropdown menus for "Main" (set to Digital) and "Backup" (set to Analog). It also features sliders and input fields for "Digital Gain" (0.0 dB), "Analog Gain" (0.0 dB), and "Analog Range" (6 dBu).
- Headphones:** A volume slider set to 0.0 dB.
- Audio Loss and Recovery:** Contains sliders and input fields for "Loss Th." (-50.0 dB), "Loss Tout" (5 s), "Recover Th." (-50.0 dB), and "Recover Tout" (5 s).

A "Save" button is positioned at the bottom right of the configuration area. On the right side of the interface, there is a vertical navigation menu with buttons for "Status", "Input", "Encoding", "IP Audio", "General", "Network", "GPIO", and "Other".

For further information on the available options and features, please refer to the User Manual which can be found on [www.devabroadcast.com/downloads](http://www.devabroadcast.com/downloads), and the accompanying CD.

**Thank you for choosing DEVA!**

*Please refer to the User manual for detailed information on how to configure and explore your device.*