

Quick User Guide

DB90-TX

IP Audio Encoder

→ **BEFORE YOU USE THIS PRODUCT** ←

In order to be able to enjoy all the benefits of owning your new DEVA product, please verify first that the latest software and firmware release were installed.

Visit www.devabroadcast.com/downloads for the most recent software and firmware downloads, prior the installation.

This Quick user guide will make the installation of DB90-TX quick and easy. Following these steps, you can simplify the process and save yourself extra time and effort. **For more information about the Safety precautions and the Operating environment recommendations please refer to the User Manual.**

STEP 1 Connection

1. The encoder has to be connected to the local network or Internet by cable with RJ-45 connector;
2. As only one input at a time can be managed by the encoder, please select the preferred signal source input - either analog or digital one:
 - For **Analog audio** use a cable that ends with two standard RCA jacks to connect the analog signal source to the analog audio inputs of DB90-TX;
 - For **Digital audio** use a cable that ends with standard RCA jack to connect the S/PDIF signal source to the digital audio input of DB90-TX;
3. Connect the device to the power supply.

STEP 2 Configuration

DB90-TX is controlled through a built-in WEB Server and a standard web browser can be used to monitor its status or to make some adjustments.

To operate the device you need to know its IP Address. In case you are not aware of it, you can hear it through the headphones when you turn on the device. Alternatively, use the Network discovery feature at Local networks (for reference see Step 9).

STEP 3 WEB Interface

Open a WEB Browser and enter the device IP Address in the browser's address field, then press Enter. The web interface will be displayed to you with the respective main pages: Status; Configuration; Factory Defaults; Reboot; Firmware Update.

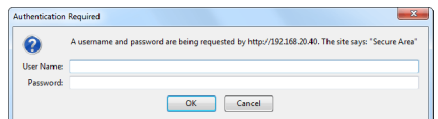
Current status information will be displayed comprising: Audio Status; Network Status; Active connections Status.

For further reference see the detailed explanation on the right part of the screen.



NOTE: Clicking on the **LIVE DATA** icon will toggle live data **ON** and **OFF**

Click on the Configuration button. Dialog box similar to the following will appear. Fill in the username and password requested, default values being: username: *user* and password: *pass*.



STEP 4

Network Configuration

General Network Settings

If you plan to use static settings please disable the DHCP and fill in the information requested - IP Address, Netmask, Gateway, Primary and Secondary DNS. Otherwise, enable the DHCP.

Web Server Settings

In order to enhance the security of DB90-TX you can set new username and password. In case a dialog box appear, fill in the NEW username and password requested.

NOTE: If username and password fields are left blank, **NO** security is used.

SNMP Settings

Press the **Download** button to download the latest available DB90-TX SNMP MIB file. Then **specify** Agent ID, Agent Port, Community, Manager IP and Manager Port.

Agent ID is used to identify the device among others when a SNMP notification is send. Agent - enables/disables SNMP Agent.

NOTE: The MIB file may vary from one firmware revision to another. Downloading this file from the device guarantees that you have the proper MIB file.

The screenshot shows the 'Configuration' page for 'IP Audio'. The 'General' section has 'DHCP' set to 'Enabled'. 'IP Address', 'Netmask', and 'Gateway' are all '0.0.0.0'. The 'WEB server' section has 'Port' set to '1024'. The 'SNMP' section has 'SNMP MIB File' with a 'Download' button, 'Agent' set to 'Enabled', 'Agent Port' '161', 'Manager Port' '162', 'Agent ID' '0', 'Community' 'DEVA90', and 'Manager IP' '0.0.0.0'. A 'Save' button is at the bottom.

STEP 5

IP Audio Configuration

Audio Settings

Choose the preferred audio signal source. Assign Encoder +Sample rate and the desired signal quality. The combination of these parameters will define the required bandwidth of your Internet connection.

NOTE: PCM will improve the quality, but higher Network bandwidth will be required consequently.

Stream Settings

Preferably change the name of the DB90-TX. Later on it will be used as a title name on all WEB pages. Customizing the name will make the device more recognizable.

If you decide to use the Stream Server you should make adjustments to the Port and the maximum connections which will be supported.

NOTE: For more information refer to the help section on the right part of the screen, containing brief information about each of the fields. For field description display, point the mouse cursor on the fields on the right.

RTP Audio Player

The RTP Settings require Decoders' Server Address and Port to be entered.

Icecast Audio Player

If DB90-TX is used as an Icecast Source Mount point, Encoder IP Address and Port should be filled in.

The username and password are used to secure the connection. Make sure to enter the same information on both sides of the connection.

NOTE: The selected encoder must match the settings of the decoders on the other side of the connection.

The screenshot shows the 'Configuration' page for 'IP Audio'. The 'Audio Settings' section has 'Input' set to 'Analog', 'A/D amplifier gain' '0', 'Channels' '2', 'Encoder + Sample rate' 'MP3 / 48 kHz', 'Quality' '6 Excellent', 'Stereo mode' 'Stereo', 'CRC' 'ON', and 'Emphasis' 'None'. The 'Stream Settings' section has 'Name' 'DB90-TX', 'Port' '5000', 'Pre-buffer' '96k', and 'Max connections' '2'. The 'RTP Settings' section has 'Address' and 'Port' '5004'. The 'Icecast Settings' section has 'Mount Point' 'DB90TX', 'Address', 'Port' '5555', 'Username' 'source', and 'Password' 'pass'. A 'Save' button is at the bottom.

The Factory Defaults page



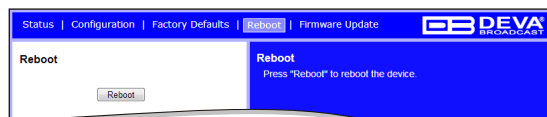
To restore DB90-TX to its Factory Defaults you should first press the Restore button. A new window will appear: confirm that you want to restore factory defaults and wait for the process to complete. All settings will be restored to their factory defaults except for

Network and WEB server Settings which remain unchanged. On completion of the process the settings should have the proper default values.

Hardware Reset

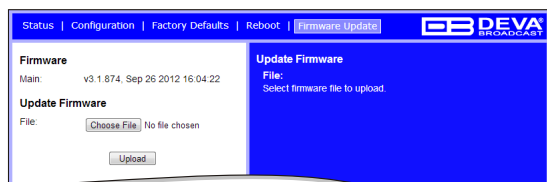
This process will fully restore DB90-TX to its Factory Defaults, including the Network settings. To start a Hardware Reset, disconnect the power supply cable from the unit. Then locate the RESET button on Rear panel, press and hold it. Afterwards, connect the power supply cable to the unit and keep the RESET button held until the PWR led starts blinking. Release the RESET button and wait for DB90-TX to reboot with the factory default settings.

Rebooting



To start Rebooting of DB90-TX press the Reboot button. A dialog warning window will appear. Confirm that you want to reboot the device and wait for the process to complete.

Firmware Update



To update the device firmware, please select the new firmware file. Press the Upload button. A dialog window will appear. Confirm firmware update and wait for the process to complete.

NOTE: The latest Firmware file can be downloaded from www.devabroadcast.com

1. Open Advanced sharing settings by clicking the **Start button**, and then on "**Control Panel**". In the search box, type "**network**", click "**Network and Sharing Center**", and then, in the left panel click "**Change advanced sharing settings**".
2. Select your current network profile.
3. Click **Turn on network discovery**, and then click Save changes. If you're prompted for an administrator password or confirmation, type the password or provide confirmation.
4. To access the device open a new Explorer bar and click on **Network**. If you have successfully enabled the network discovery option, the device will be displayed. A double click on **DB90-TX** will open a new WEB browser window.

NOTE: If you have already enabled this function on your computer just open a new Explorer bar and click on **Network**. The device must be displayed. If not, follow the instructions from Step 7.

**Enjoy the work with DB90TX - a product of superb quality and functionality.
For detailed explanations concerning the device refer to its complete manual.**